



# St. Mary's Catholic Primary School

Back Lane, Little Crosby, Liverpool, L23 4TS

T: 0151 924 4447

[www.stmaryscatholicps.co.uk](http://www.stmaryscatholicps.co.uk)

*In God's light, we love, learn and grow together*

*The winter is over; the rains have stopped; in the countryside the flowers are in bloom. This is the time for singing; the song of doves is heard in the fields.  
(Song of Solomon 2:11-12)*

## WORLD BOOK DAY



The children enjoyed dressing up for World book day. It was lovely to see the children and staff so enthusiastic about their favourite books. Well done to all the parents who bought/made costumes. Reading is something the whole school is promoting. We want the children to enjoy reading for pleasure. Our Y5&6 also had a visit to Pritchard's Bookshop in Crosby Village which they enjoyed.

Thank you for all the support!



### Dates to Note

**Friday 3<sup>rd</sup> March** – World Book Day – Dress up as your favourite book character and bring the book to school.

**Friday 24<sup>th</sup> March** – Parent Coffee morning arranged by Mrs Lynn Rudd; Pastoral Advisor 9-10:30am

**Tuesday 28<sup>th</sup> March** – Y3&4 final swim

**Wednesday 29<sup>th</sup> March** – Whole school assembly 2pm. Parents invited.

**Thursday 30<sup>th</sup> March** – Mad Hair day. Bring in £1 donation. Term ends at 1:15pm

**HALF TERM BREAK- Mr McLaughlin Holiday Club**

**Monday 3<sup>rd</sup> April – Thursday 6<sup>th</sup> April**

**Tuesday 11<sup>th</sup> April – Friday 14<sup>th</sup> April**

**Tuesday 18<sup>th</sup> April** – Term begins. Plus Y3&4 Swim

**Monday 8<sup>th</sup> May** – BANK HOLIDAY

**Tuesday 9<sup>th</sup> May** – Y6 SATS BEGIN!

**Wednesday 17<sup>th</sup> May**- Y5&6 Crucial Crew visit

**Friday 18<sup>th</sup> May** – TeachRex for whole school

**Monday 22<sup>nd</sup> May** – Whole School Quidditch Day

**Wednesday 25<sup>th</sup> May**- Teach Rex whole school prize

**Thursday 26<sup>th</sup> May** – Term End 2:30pm



## NEW WEBSITE

School will launch their new look website over the next few days. All the information will remain the same but the website will look a little different. It may take a while to get used to it but hopefully in the long run it will be more current and have more information available for everyone. The address will remain the same.

### ATTENDANCE SUMMARY: 2022-23

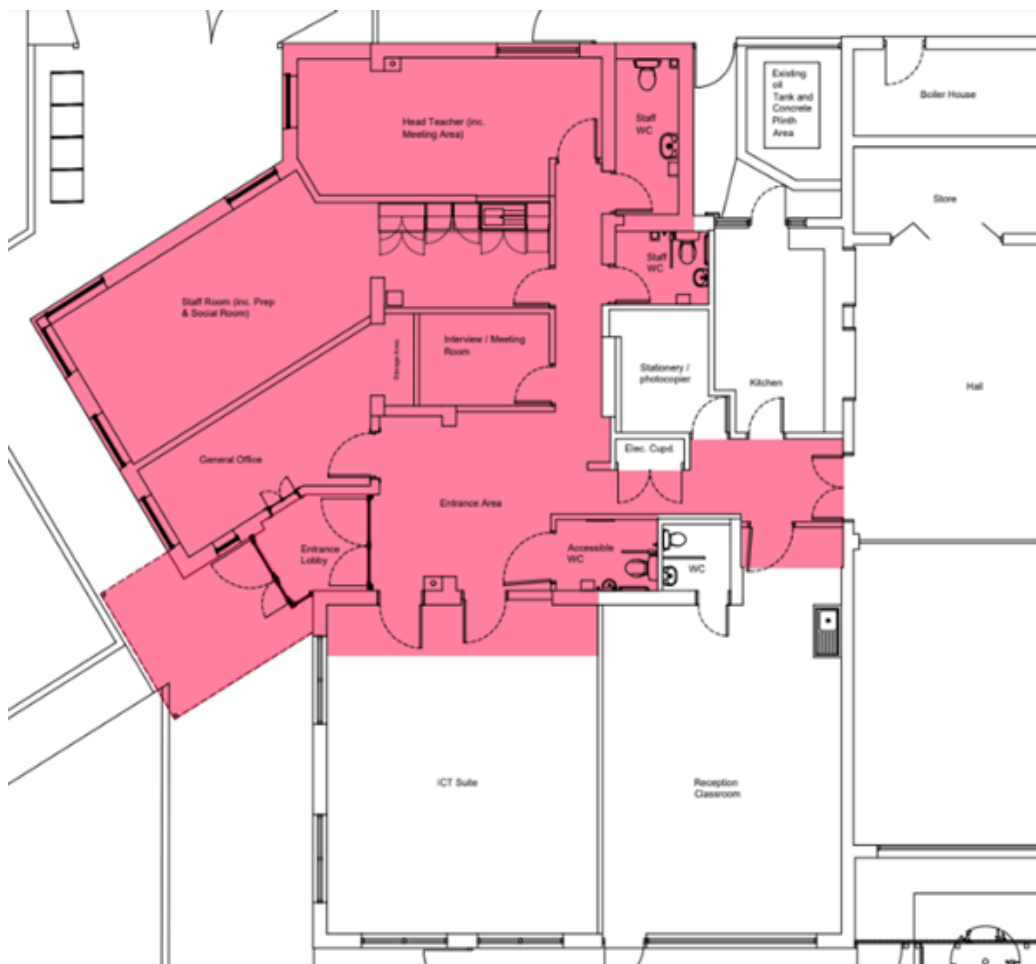
Sefton council class any child below **90% as persistently absent**. Our whole **school target is 96.5%** which tends to be in line with national averages. It is so important that children attend school as much as possible. We understand that this cannot be the case with genuine illnesses.

<b>DARK GREEN– Very Good</b>		<b>GREEN – Good</b>		<b>AMBER- Slight Concern</b>		<b>RED- Below the acceptable level fir school and approaching persistently absent</b>	
<b>WHOLE SCHOOL - 93.8%</b>							
<b>Reception</b>	<b>Year 1</b>	<b>Year 2</b>	<b>Year 3</b>	<b>Year 4</b>	<b>Year 5</b>	<b>Year 6</b>	<b>Year 6</b>
<b>94.3%</b>	<b>93.5%</b>	<b>95.6%</b>	<b>92.9%</b>	<b>92.9%</b>	<b>93.8%</b>	<b>93.6%</b>	<b>93.6%</b>

School are becoming concerned with the overall level of attendance as this is much lower than local schools in the area. It must be emphasised that children must be in school unless too ill. More children are staying off for reasons such as a slight cold or slight temperature. Moving forward more letters and meetings with the senior leadership team of the school regarding attendance will now be issued and the Local Authority Attendance Officer will need to get involved with families who continue to keep children off sporadically. All children deserve a full education.

## School Extension Work

Here is a floor plan of the extension work that is due to begin this academic year for the front of the school. School will keep you posted when they get a confirmed start date.



## Birthday's



Just a reminder that if it is your child's birthday, school are happy for you to bring small cupcakes in and small packets of Haribo. But please make sure you send enough in for the class. Teachers are having to manage very upset children if there hasn't been enough sent in. It would be a shame to have to ban birthday celebration treats.

## Half Term Club

This coming Spring break Mr McLaughlin will be running the club on the Mon-Thu and Tue-Fri from 9am to 3pm. The cost is £20 a day or £65 for the 4 days per child. If you wish to book a place as there is limited availability, call Mr McLaughlin on

**07973928063**